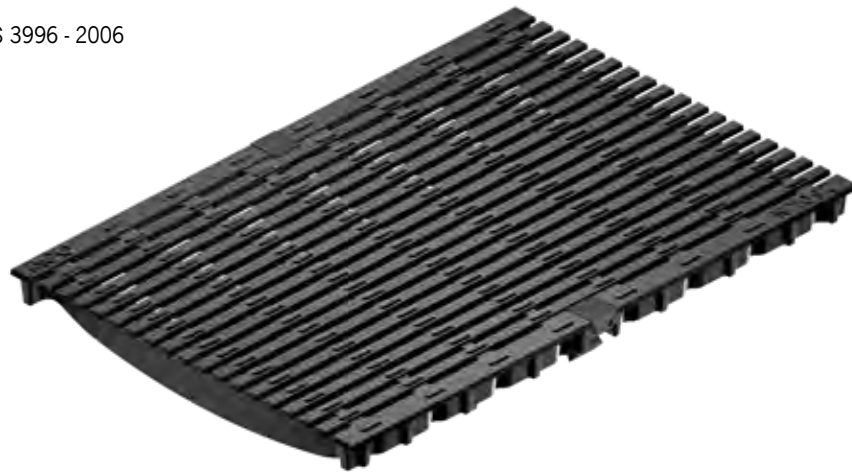


Type 876D Longitudinal ductile iron grate (ADA)



Product Features

- Certified to EN 1433 Load Class C - 56,000 lbs - 967 psi
- Uses 'DrainLok' boltless locking system
- Suitable for use with K300, KS300, and H300K-13 channels and 621G, 621S, 631G, 631S catch basins
- Manufactured from ductile iron to ASTM A 536-84 - Grade 65-45-12
- E- coated for improved resistance against rust
- Complies with ADA - American Disabilities Act of 1990 Section 4.5.4
- Complies with ASME: A112.6.3 - 2001: Section 7.12
Heel Resistant Strainers and Grates
- Bicycle Tire Penetration Resistant to AS 3996 - 2006



Specifications

General

The surface drainage system shall be ACO Drain K300, KS300, and H300K-13, channels* and 621G, 621S, 631G, and 631S catch basins complete with ACO Type 876D longitudinal ductile iron grate with 'DrainLok' locking as manufactured by ACO, Inc. or similar approved.

Materials

The covers shall be manufactured from ductile iron and have **minimum** properties as follows:

- **Independently certified to meet Load Class C to EN 1433 - 56,000 lbs - 967 psi**
- **Ductile iron to ASTM A 536-84 - Grade 65-45-12**
- **Intake area of 64.3 sq. in. (414.83 cm²) per half meter of grate**

The overall width of 13.31" (338mm) and overall length of 19.69" (500mm). Slots measure at 0.24" by 1.97".

Installation

The trench drain system and grates shall be installed in accordance with the manufacturer's installation instructions and recommendations.

* delete as appropriate

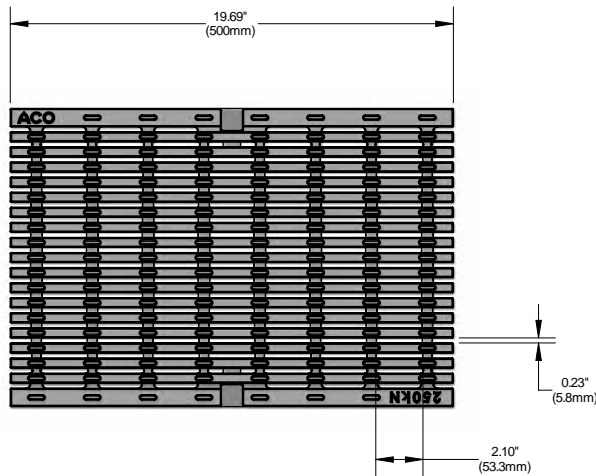
ACO Specification Information

ACO DRAIN

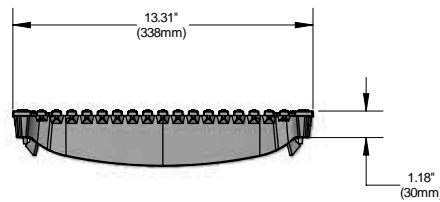
Type 876D Longitudinal ductile iron grate (ADA)



Plan view

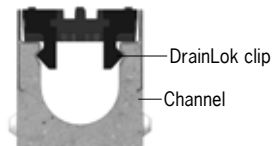


Side elevation



| Description | Part No. | Length inches (mm) | Width inches (mm) | Weight lbs. |
|--|--------------|-----------------------|----------------------|----------------|
| DrainLok grate Type 876D Ductile iron longitudinal grate | 99588 | 19.69 (500) | 13.31 (338) | 35.0 |

'DrainLok' locking mechanism



ACO DrainLok™ is a patented, boltless locking system that removes the need for bolts and bars and improves the hydraulic capacity of the channel. The DrainLok™ mechanism simply clips into the channel edge rail for rapid installation. ACO DrainLok™ grates are fitted with an anti-shunt mechanism that restricts unwanted grate movement when installed, improving durability and longevity of the system.

ACO, Inc.
Northeast Sales Office
 9470 Pinecone Drive
 Mentor, OH 44060
 Tel: (440) 639-7230
 Toll free: (800) 543-4764
 Fax: (440) 639-7235

West Sales Office
 825 W. Beechcraft St.
 Casa Grande, AZ 85122
 Tel: (520) 421-9988
 Toll Free: (888) 490-9552
 Fax: (520) 421-9899

Southeast Sales Office
 4211 Pleasant Road
 Fort Mill, SC 29708
 Toll free: (800) 543-4764
 Fax: (803) 802-1063



Electronic Contact:
 info@ACODrain.us
 www.ACODrain.us



© April 2018, ACO, Inc. This information is believed to be accurate but it is not guaranteed to be so. We cannot assume liability for results that buyer obtains with our product since conditions of use are beyond the control of the company. It is the customer's responsibility to evaluate suitability and safety of product for his own use. ACO, Inc. reserves the right to change the product and specifications without notice.